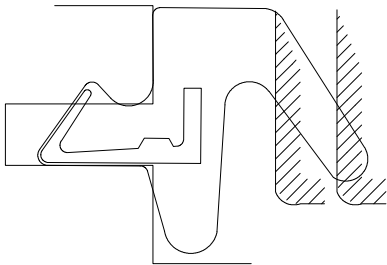
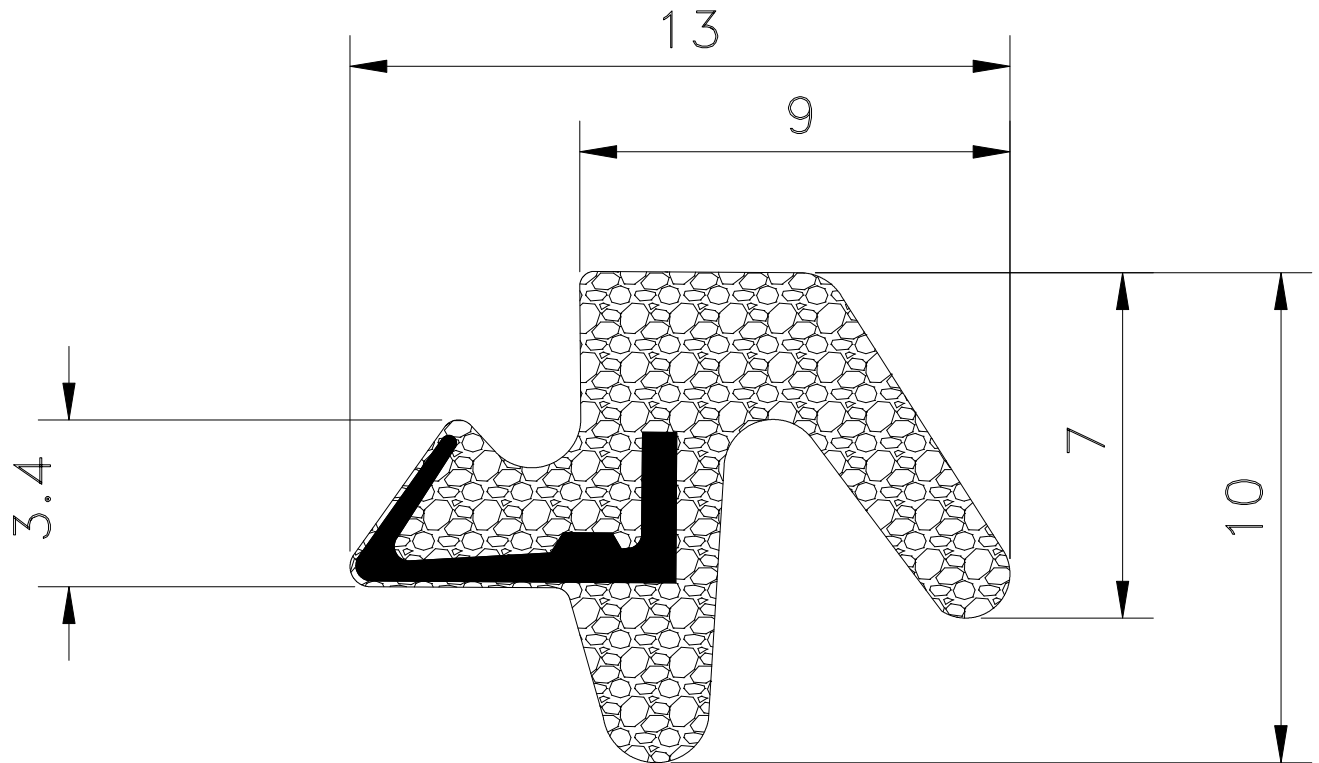
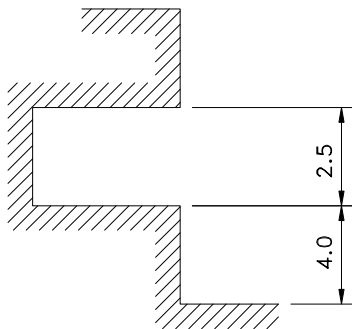


Q-LON* 9985



APPLICATION DETAILS



NOMINAL KERF FIX DIMS
SCALE 5:1

TECHNICAL SPECIFICATION

- A, SEAL GAP. 4.0mm MIN TO 6.5mm MAX
- B, KERF SLOT WIDTH. 2.5mm NOMINAL
- C, MINIMUM KERF SLOT DEPTH 7.0mm

- D, COLOURS AVAILABLE: BRONZE
WHITE
BLACK
GREY
BEIGE
LIGHT OAK