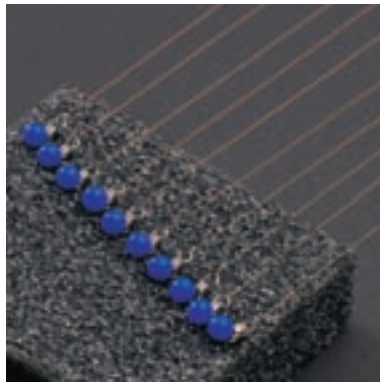


# Corona wires

## Cost-effective reliability

Corona wires are widely used in toner-based printer engines, being a highly reliable, cost-effective component for producing the various charging and discharging cycles in photoreceptor drums and belts. Corona wires allow extremely uniform charging, even in the fastest high-resolution printers. Regular cleaning ensures corona wires offer a long service life. Modern office equipment designs enable precise control of the ozone generated by corona wires during operation. Carefully selected tungsten alloys are used as the base material. The finished product is a pre-mounted corona wire with eyelets, springs, terminals or other connecting devices.



## Uses and finishes

Corona wires are used in various stations as charge, pre-charge, clean, transfer or separation coronas. They have tightly-controlled diameter tolerances and offer the highest tensile strength for any given diameter, enabling maximum pre-tensioning to avoid vibration at minimal diameters.

### **A range of different surface finishes is available to reduce contamination and the onset of corrosion on the wire surface:**

*Chemical cleaning:* the tungsten wire has no additional surface finish, in this state the wire already has superior purity and smoothness.

*Oxidization:* a controlled oxidation process deposits a thin, even layer of tungsten oxide that tempers further oxidation in the printer engine processes.

*Gold or platinum plating:* the tungsten wire is covered with a thin layer of precious metal to suit the specific print engine processes. This coating significantly increases the service life of the corona wire.

The cleaning interval depends on the surface finish selected.

Schlegel bvba  
Rochesterlaan 4  
8470 Gistel  
BELGIUM

Tel: +32 (0)59 270 300

Fax: +32 (0)59 270 345

industrial.products@schlegel.be

www.schlegel.be

a UniPoly Company





# Corona wires

## Technical details

- Wire diameters from 25 to 200  $\mu\text{m}$
- Precious metal thicknesses from 0.3 to 1.5  $\mu\text{m}$  (plating process) and 1 to 5  $\mu\text{m}$  (cladding process)
- Corona wires finished with connectors, springs or eyelets
- Finished wires can be assembled in scorotrons or cartridges (length up to 1000 mm)
- Tensile strength: 2 to 3 kPa, depending partly on the surface finish
- Packaging concepts for assembly line and replacement parts

## Schlegel offers you more

Schlegel is dedicated to continuously developing and investing in leading-edge production equipment. It is the additional strength of this quest for constantly-improved productivity that makes Schlegel an ideal long-term partner for copier and printer consumables.

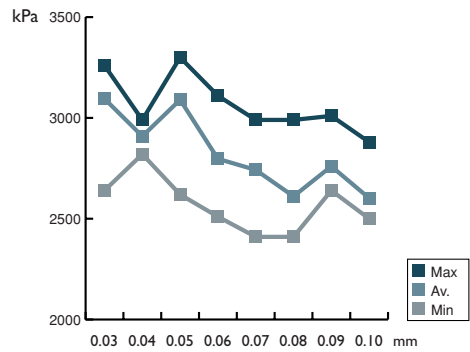


Fig. 1

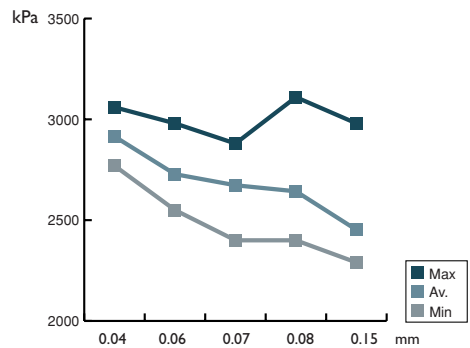


Fig. 2

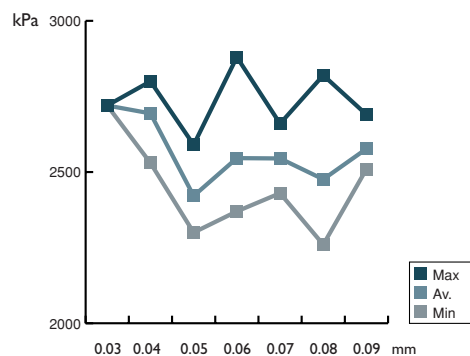


Fig. 3

Tensile strength against wire diameter (reference values only)

Fig. 1: For electro-polished wire

Fig. 2: For oxidized wire

Fig. 3: Gold-plated tungsten wire